



Product Trends Built-In Coffee Making

In this issue's project spotlight, one of our client's favorite features is the Miele built-in coffee making system (model #CVA6805). This modern marvel will have you throwing away your single cup coffee maker faster than you can say espresso. Not only will this system make a single cup of coffee, it can make a cappuccino, or a full pot—and it will do it from whole beans that it grinds. If you are an environmentally conscious consumer, this bean-to-cup device is a real game changer. It offers the convenience of single cup coffee making without the plastic K-cups adding to landfills. Plus, this device can be used to make two hot beverages in quick succession or used to make an 8-cup pot. With its plumbed water connection and self-rinsing and cleaning modes, it makes coffee preparation as convenient as ordering from your favorite coffee shop from the comfort of your own home. Moreover, the manufacturer incorporated intuitive touch screen technology to make it simple and easy to use. These Miele built-in coffee making systems retail for around \$4000, so they may not be the right option for everyone. But, for the true coffee lover, this innovative coffee maker is well worth the investment.

the craftsman

610.584.0665

www.CustomCraftDBR.com

PA# 5292



BREEZY FIRST FLOOR RENOVATION IN BLUE BELL

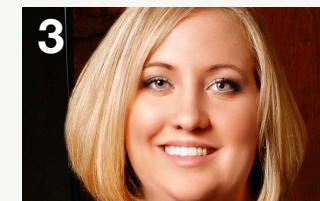
Pleased with our work on another project, a client in Blue Bell recently had us return to renovate their first floor. The work encompassed the kitchen, as well as the adjoining family room, powder room, laundry and staircase. Their goals for the renovation were to make the entire space more attractive and functional for entertaining, as well as everyday life.

At the heart of this project was their kitchen. The old kitchen suffered from a cramped layout that made meal preparation a challenge. Other issues included lack of storage and counter

space, as well as outdated appliances. By re-configuring the layout of the existing space, we were able to design a kitchen that provided all the amenities they needed and increased storage and counter space significantly. One of the keys to the design was the removal of the dining area and the installation of new hardwood flooring throughout the kitchen and adjoining family room. The two rooms are now seamlessly connected and traffic flow between the rooms has been dramatically improved.

Our clients selected a color palette intended to evoke memories of balmy

This Issue



Welcome Aboard Megan!



Renovations Progressing on New Custom Craft Office



Product Trends

Breezy First Floor Renovation in Blue Bell

summer days spent in the tangy sea air. To bring that feeling to life, we incorporated shades of cool white and blue and grounded them with warm wood tones.

Legacy Crafted Cabinetry was installed to provide the additional storage and counter space our clients desired. The perimeter cabinets were painted Glacier white by Sherwin Williams, while the island cabinets and walls were painted a Breezy blue. Another touch of blue was added to the framed harlequin tile vignette above the Wolf range. The white field tile on the backsplash is a polished 3" x 6" Daltile marble called Contempo.

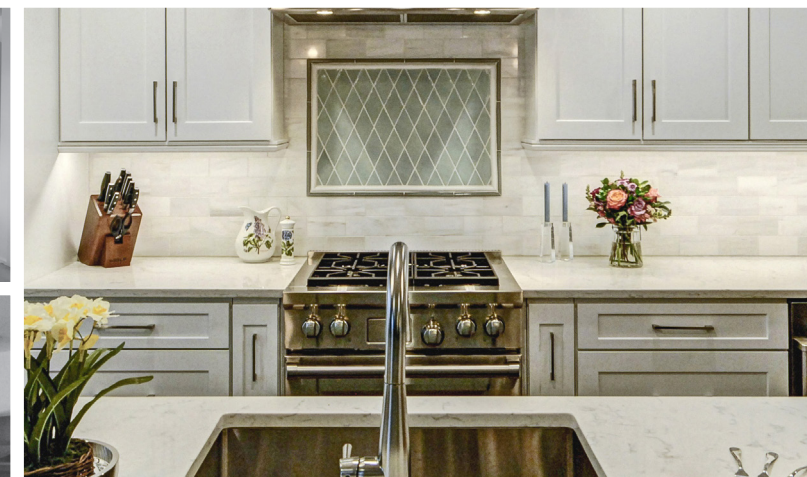
On the countertops, we used white Viatera Minuet Quartz. The gray veins of the quartz compliment the silver tones of the cabinetry hardware as well as the stainless-steel appliances. Among our client's favorite features of the kitchen is the Miele built-in coffee making system we installed. This sophisticated coffee maker is plumbed and is able to prepare coffee, cappuccino, or espresso automatically from freshly ground beans with the touch of an interactive screen.

(Read more about this amazing innovation in coffee making in our Product Trends article.)

Avid football fans, our clients also wanted to improve their game viewing experience. Toward this end, we made some changes to their family room. By changing the fireplace surround, we were able to update the look while also lowering it to accommodate a larger, flat screen television. An additional television was added above the cabinetry in the kitchen, allowing guests to view the game from the kitchen, or family members to catch up on news over breakfast.

The powder and laundry rooms were updated in this project, as well as the front staircase. Gone is the tired looking carpeting. In it's place is gorgeous hardwood with treads stained the same Autumn Leaf as the hardwood flooring.

Our clients love their breezy, new first floor. Not only has daily life been dramatically improved, they are now well-situated to entertain family and friends for the upcoming football season.



Welcome Aboard Megan!



Please join us in welcoming Megan Satalino, Custom Craft's Office Administrator. Originally from Pittsburgh, Megan moved to Philadelphia to attend Temple University, graduating with a degree in sociology. She has extensive customer service experience, and previously worked in office management for a luxury jeweler. With her attention to detail and outstanding interpersonal skills, Megan is an asset to our rapidly growing organization. Outside of the office, Megan enjoys golfing with her husband Joe, and spending time outdoors with their 3 dogs.

Renovations Progressing on New Custom Craft Office



Our craftsmen have been busy renovating the building at 1111 Forty Foot Road to prepare for our impending office move. Recently we completed the exterior grading, and the exterior walls were cleaned and prepped for paint. James Hardie siding was installed on the rear addition, and the nearby porch roof and ceiling trim was finished and stained.

We passed all the rough mechanical township inspections (electrical, plumbing, and HVAC) which enabled us to make progress on the interior renovations, including insulation and finishing up drywall. In summary, our team has made great strides and we are counting down the days until we move it. Stay tuned for more updates, as well as information on the grand opening event we are planning for Spring 2019.

